


Anti-beta 1 Adrenergic Receptor antibody ab3442

3 Abreviews | 1 References | 3 图像

概述

产品名称	Anti-beta 1 Adrenergic Receptor抗体
描述	兔多克隆抗体to beta 1 Adrenergic Receptor
经测试应用	WB, ICC/IF, IP, IHC-FoFr, ICC, IHC-P, Flow Cyt
种属反应性	与反应: Mouse, Rat, Cat, Human, Non Human Primates, African Green Monkey, Prairie Vole 预测可用于: Rhesus monkey 
免疫原	Synthetic peptide corresponding to Mouse beta 1 Adrenergic Receptor aa 394-408. Sequence: HGDRPRASGCLARAG

Run BLAST with 

Run BLAST with 

性能

形式	Liquid
存放说明	Shipped at 4°C. Store at +4°C short term (1-2 weeks). Upon delivery aliquot. Store at -20°C. Avoid freeze / thaw cycle.
存储溶液	Preservative: 0.05% Sodium azide Constituents: 99% PBS, 0.1% BSA
纯度	Whole antiserum

Primary antibody说明

Adrenergic receptors (ARs) are members of the 7-transmembrane domain G-protein-coupled receptor superfamily that bind the endogenous catecholamines epinephrine and norepinephrine. Pharmacological, structural, and molecular cloning data indicate significant heterogeneity within this receptor family. Nine receptor subtypes have been identified thus far including three alpha-1 AR subtypes (1A/D, 1B, and 1C), three alpha-2 ARs (2A, 2B, and 2C), and three beta AR subtypes (1, 2, and 3). ARs participate in either the onset or maintenance of several disease states including hypertension, cardiac dysfunction (congestive heart failure, ischemia, arrhythmias), diabetes, glaucoma, depression, and impotence. BARS participate in diverse processes including development, behavior, cardiac function, smooth muscle tone, and metabolism. In gene-knockout experiments, the majority of mice that lack the B1AR gene die prenatally and those that do survive until adulthood display abnormal cardiac function.

Other studies have shown that the direct regulation of cardiac B1AR density by thyroid hormones occurs at the transcriptional level and is modulated by the catecholamine sensitive-adenylyl cyclase system. Evidence for the effects of cAMP on B1AR regulation has come from a study of members of the cAMP response element (CRE) modulator (CREM) family of transcription factors in transformed cell lines.

克隆 多克隆

同种型 IgG

应用

Our Abpromise guarantee covers the use of **ab3442** in the following tested applications.

The application notes include recommended starting dilutions; optimal dilutions/concentrations should be determined by the end user.

应用	Abreviews	说明
WB		1/1000. Detects a band of approximately 50.5 kDa (predicted molecular weight: 50 kDa).
ICC/IF		1/100. Immunofluorescence staining of B1AR in mouse kidney distal tubule yields a pattern consistent with plasma membrane staining.
IP		Use at an assay dependent concentration.
IHC-FoFr		Use at an assay dependent concentration.
ICC		1/5000.
IHC-P		1/200.
Flow Cyt		Use at an assay dependent concentration. ab171870 - Rabbit polyclonal IgG, is suitable for use as an isotype control with this antibody.

靶标

功能 Beta-adrenergic receptors mediate the catecholamine-induced activation of adenylyl cyclase through the action of G proteins. This receptor binds epinephrine and norepinephrine with approximately equal affinity.

序列相似性 Belongs to the G-protein coupled receptor 1 family, Adrenergic receptor subfamily, ADRB1 sub-subfamily.

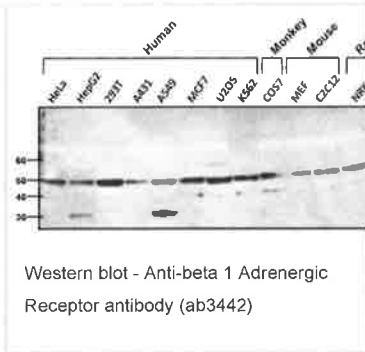
结构域 The PDZ domain-binding motif mediates competitive interactions with GOPC, MAGI3 and DLG4 and plays a role in subcellular location of the receptor.

翻译后修饰 Homologous desensitization of the receptor is mediated by its phosphorylation by beta-adrenergic receptor kinase.

细胞定位

Cell membrane. Localized at the plasma membrane. Found in the Golgi upon GOPC overexpression.

Anti-beta 1 Adrenergic Receptor antibody 图像



All lanes : Anti-beta 1 Adrenergic Receptor antibody (ab3442) at 1/1000 dilution

Lane 1 : As above

Lane 2 : As above

Lane 3 : As above

Lane 4 : As above

Lane 5 : As above

Lane 6 : As above

Lane 7 : As above

Lane 8 : As above

Lane 9 : As above

Lane 10 : As above

Lane 11 : As above

Lane 12 : As above

Lysates/proteins at 25 µg per lane.

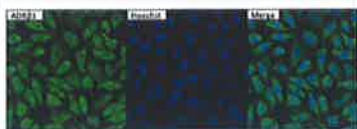
Secondary

HRP-conjugated Goat anti-Rabbit at 1/20000 dilution

Predicted band size : 50 kDa

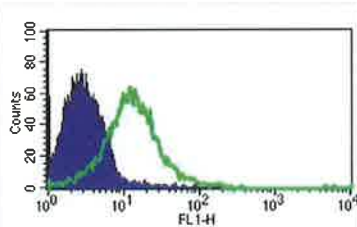
Observed band size : 50 kDa

Additional bands at : 30 kDa. We are unsure as to the identity of these extra bands. Western blot analysis of ADR-Beta-1 was performed by loading 25µg of various whole cell lysates onto a 4-20% Tris-HCl polyacrylamide gel. Proteins were transferred to a PVDF membrane and blocked with 5% Milk/TBST for at least 1 hour. Membranes were probed with ab3442 at a dilution of 1/1000 overnight at 4°C on a rocking platform. Membranes were washed in TBS-0.1%Tween 20 and probed with a goat anti-rabbit-HRP secondary antibody at a dilution of 1/20,000 for at least one hour. Membranes were washed and chemiluminescent detection performed.



Immunocytochemistry/
Immunofluorescence - Anti-beta 1
Adrenergic Receptor antibody (ab3442)

ab3442 at 1/100 dilution staining beta 1 Adrenergic Receptor in untreated HeLa cells by Immunocytochemistry/ Immunofluorescence. Formalin fixed cells were permeabilized with 0.1% Triton X-100 in TBS for 15 minutes at room temperature. Cells were then blocked with 5% normal goat serum for 15 minutes at room temperature. Cells were probed with a rabbit polyclonal antibody recognizing ADR-Beta-1, at a dilution of 1/100 for at least 1 hour at room temperature. Cells were washed with PBS and incubated with DyLight 488-conjugated goat-anti-rabbit secondary antibody at a dilution of 1/400 for 30 minutes at room temperature. Nuclei were stained with Hoechst 33342 dye.



Flow Cytometry - Anti-beta 1
Adrenergic Receptor antibody (ab3442)

This image is courtesy of an anonymous
Abreview

ab3442 staining the beta 1 Adrenergic Receptor in mouse bone marrow cells by Flow Cytometry. Cells were fixed with paraformaldehyde and permeabilized with 0.5% BSA in 2mM EDTA/PBS. The sample was incubated with the primary antibody (1/100) for 20 minutes at 4°C. An Alexa Fluor® 488-conjugated goat anti-rabbit IgG polyclonal (1/1000) was used as the secondary antibody.
Gating Strategy: Blood cells.

Please note: All products are "FOR RESEARCH USE ONLY AND ARE NOT INTENDED FOR DIAGNOSTIC OR THERAPEUTIC USE"

Our Abpromise to you: Quality guaranteed and expert technical support

- Replacement or refund for products not performing as stated on the datasheet
- Valid for 12 months from date of delivery
- Response to your inquiry within 24 hours
- We provide support in Chinese, English, French, German, Japanese and Spanish
- Extensive multi-media technical resources to help you
- We investigate all quality concerns to ensure our products perform to the highest standards

If the product does not perform as described on this datasheet, we will offer a refund or replacement. For full details of the Abpromise, please visit <http://www.abcam.cn/abpromise> or contact our technical team.

Terms and conditions

- Guarantee only valid for products bought direct from Abcam or one of our authorized distributors