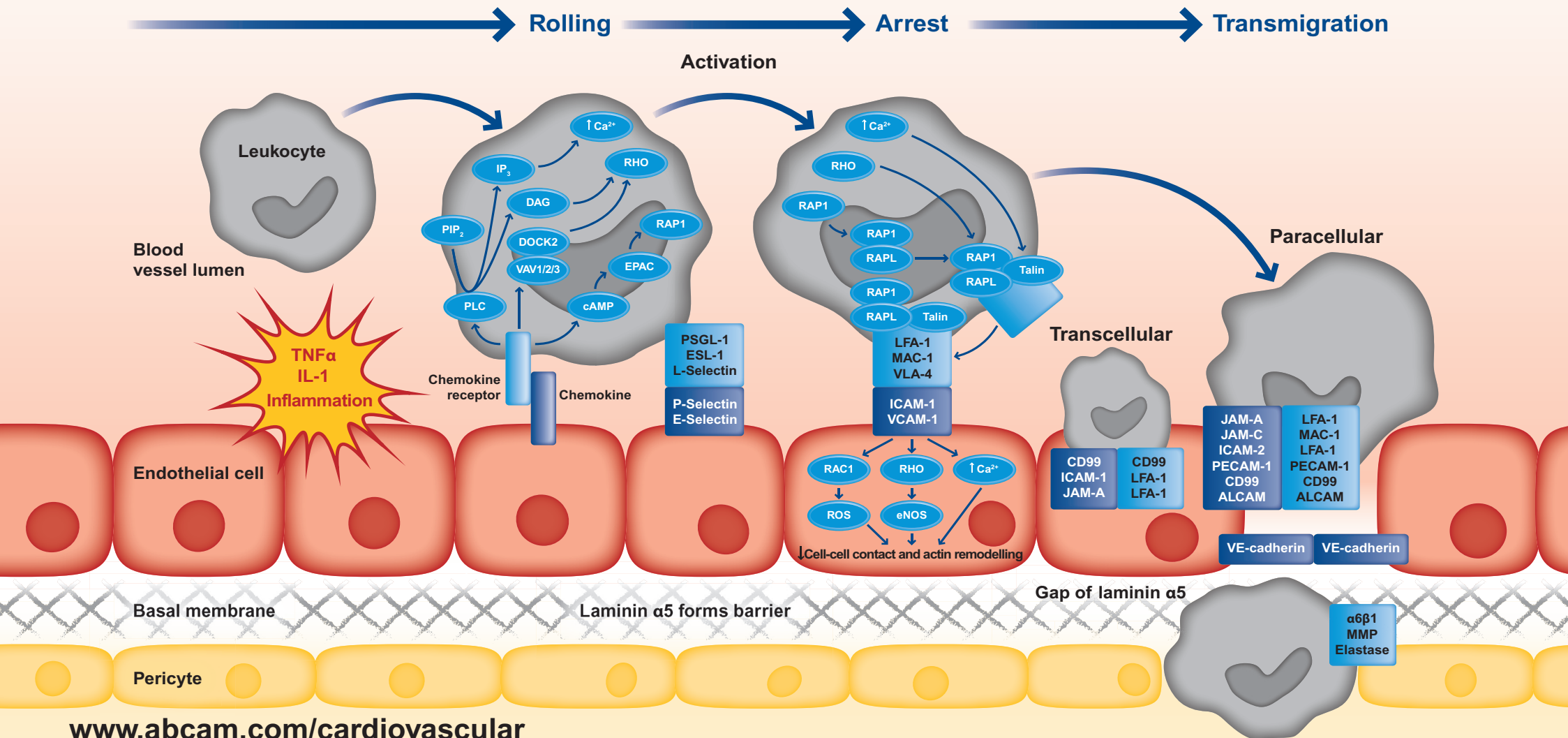
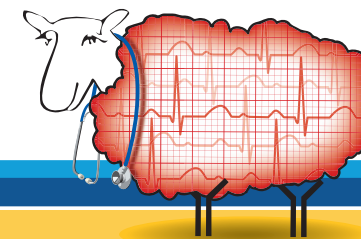


Leukocyte recruitment in inflammation

by Beat Imhof,
Yalin Emre and Abcam





Leukocyte recruitment in inflammation

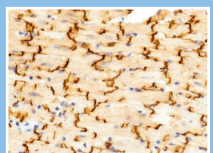
Upon inflammation, leukocytes are captured from the circulation. Recognition of chemokines expressed on endothelial cells by specific chemokine receptors (G protein coupled receptors) leads to leukocyte activation and slow rolling on the endothelial wall. Downstream activation of PLC, RHO, and RAP1 GTPase signaling pathways leads to the recruitment and activation of integrins on the leukocyte surface. Binding of integrins to their ligands (e.g. LFA-1 to ICAM-1) activates RAC1, RHO, and calcium signaling pathways. The consequence is the remodeling of the actin network and a decrease of endothelial cell contacts, thus initiating and favoring leukocyte extravasation.

Produced in collaboration with Yalin Emre, PhD (Post doctoral fellow) and Beat A. Imhof, PhD, Professor and Chair, Department of Pathology and Immunology, Medical Faculty, Geneva, Switzerland.

For more information visit: www.abcam.com/cardiovascular

Abbreviation	Full name
eNOS	Endothelial nitric oxide synthase
ICAM	Intercellular adhesion molecule
JAM	Junctional adhesion molecule
LFA-1	Lymphocyte function-associated antigen 1 (α L β 2-integrin)
MAC-1	Macrophage antigen 1 (CD11b, α M β 2-integrin)
PECAM1	Platelet/endothelial-cell adhesion molecule 1
PLC	Phospholipase C
RAC1	RAS-related C3 botulinum substrate
RAPL	Regulator for cell adhesion and polarization enriched in lymphoid tissues
RAP1	RAS-related protein 1
RHO-A	RAS homologue gene-family member A
ROS	Reactive oxygen species
VCAM-1	Vascular cell-adhesion molecule 1 (CD106)
VLA-4	Very late antigen 4 (α 4 β 1-integrin)

Product highlights

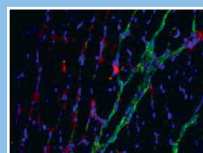


Connexin 43/GJA1 (ab11370)

Clonality: P

Applications:
ICC, ICC/IF, IF, IHC-Fr, IHC-P, WB

Reactivity:
Hu, Ms, Rat, Chk, Cow, Hm, Mk



MMP9 (ab38898)

Clonality: P

Applications:
ELISA, IHC-FoFr, IHC-Fr, IHC-P, IP, WB

Reactivity:
Hu, Ms, Dog

Leukocyte related antibodies from Abcam:

Product	Clonality	Applications	Host	Species Reactivity	Datasheet www.abcam.com/ab...
Antibodies					
CD162 [3E2.25.5(PL1)]	M	Flow Cyt, IHC-Fr, IHC-P, WB	Ms	Hu	19793
CD31	P	ICC/IF, IHC-Fr, IHC-P, WB	Rb	Hu	28364
CD40L	P	ELISA, IHC-Fr, IHC-P, WB	Rb	Hu, Rat	2391
CD62E [1.2B6]	M	ELISA, Flow Cyt, IHC-Fr, IP, WB	Ms	Hu, Pig	6630
CD62L [IVA94]	M	Flow Cyt, IP	Ms	Cow	3920
CD62P [AK-6]	M	Flow Cyt, IHC-Fr, IHC-P, IP, WB	Ms	Hu, RMk	6632
Connexin 43 / GJA1	P	ICC, ICC/IF, IF, IHC-Fr, IHC-P, WB	Rb	Hu, Ms, Rat, Chk, Cow, Hm, Mk	11370
eNOS	P	IHC-Fr, IHC-P, WB	Rb	Hu, Ms, Rat, Cow, Dog, Pig	5589
Fibrinogen	P	ELISA, FuncS, ICC/IF, IHC-P	Rb	Hu, Ms, Rb	34269
ICAM1 [MEM-111]	M	ELISA, Flow Cyt, IP, WB	Ms	Hu, Rat, Cow	2213
MMP14 [EP1264Y]	M	Flow Cyt, ICC/IF, IHC-P, IP, WB	Rb	Hu, Ms, Rat	51074
MMP2	P	Flow Cyt, ICC/IF, IHC-P, IP, WB	Rb	Hu	52756
MMP9 - Whole molecule	P	ELISA, IHC-FoFr, IHC-Fr, IHC-P, IP, WB	Rb	Hu, Ms, Dog	38898
PPAR alpha	P	ELISA, ICC/IF, IHC-Fr, IHC-P, WB	Rb	Ms	8934
VCAM1 [324]	M	ICC, IHC (Methanol fixed), IHC-Fr, WB	Rat	Ms, Rat	78712
VE Cadherin [BV9]	M	Flow Cyt, ICC, ICC/IF, IHC-Fr, IHC-P, IP, Neut, P, WB	Ms	Hu, Ms	7047
Elisa kits					
CD40L Human ELISA Kit - 1 x 96 Well Plate		ELISA	-	Hu	99991
MMP2 Human ELISA kit - 1 x 96 Well Plate		ELISA	-	Hu	100606
MMP2 Mouse ELISA Kit - 1 x 96 Well Plate		ELISA	-	Ms	100730
VCAM1 Human ELISA Kit - 1 x 96 Well Plate		ELISA	-	Hu	100661
VCAM1 Mouse ELISA Kit - 1 x 96 Well Plate		ELISA	-	Ms	100750
Proteins					
CD31 protein (Tagged)		ELISA, Inhib, SDS-PAGE, WB	-	-	39438
CD40 protein (Fc Chimera Active)		FuncS, SDS-PAGE	-	-	83917
CD40L protein (Active)		FuncS, SDS-PAGE	-	-	50160
CD62E protein (His tag)		SDS-PAGE	-	-	52148
CD62L protein		SDS-PAGE	-	-	53383
CD62L protein (Fc Chimera)		SDS-PAGE	-	-	83824
CD62P protein		SDS-PAGE	-	-	83582
CD62P protein (Fc Chimera Active)		FuncS, SDS-PAGE	-	-	83583
Fibrinogen protein (Active)		FuncS, SDS-PAGE	-	-	92791
ICAM1 protein (Human)		SDS-PAGE	-	-	82125
MMP14 protein (Active)		SDS-PAGE	-	-	54060
MMP2 protein (Human)		ELISA, SDS-PAGE, WB	-	-	40964
MMP9 protein (Human)		FuncS, SDS-PAGE, WB	-	-	39308
PPAR alpha protein (His tag)		GSA, Other, SDS-PAGE	-	-	81927
VCAM1 protein (His tag)		WB	-	-	82993