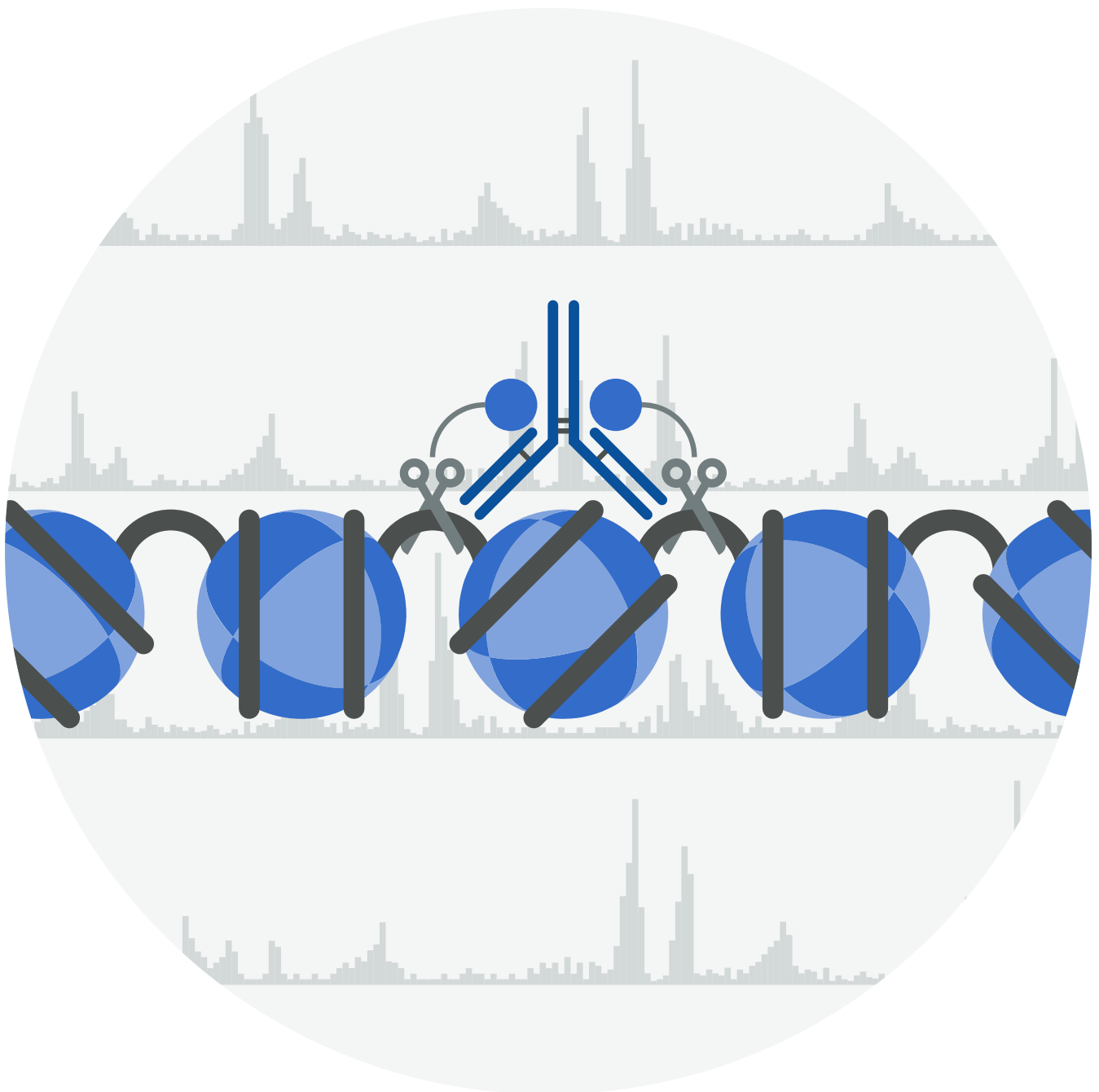


abcam

Antibodies validated in ChIC/CUT&RUN-seq to support your epigenetics research

Save valuable time and resources with antibodies
cross-validated with our new ChIC/CUT&RUN pAG-MNase
enzyme (ab285373)

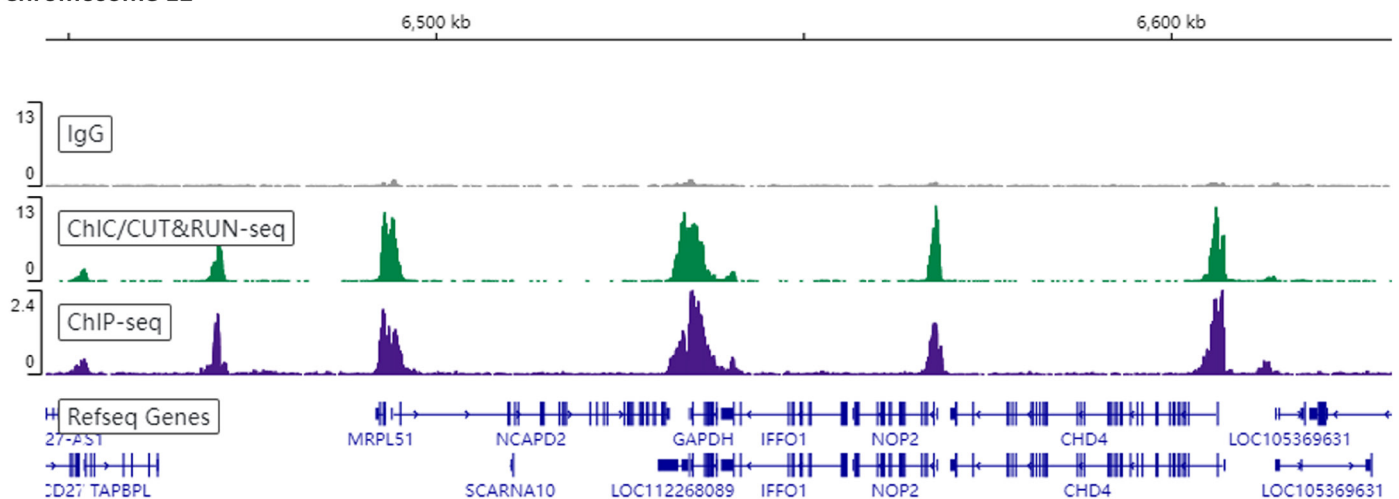


ChIC/CUT&RUN-seq benefits

Features	
Multiple sizes available for pAG-MNase (ab285373)	100 µL vial, 50 reactions 500 µL vial, 250 reactions
Procedure time	1 - 2 days
Cell number	Fewer than 100 cells for histone modifications and ~1000 cells for transcription factors vs ChIP-seq >10 ⁶ cells
Signal to noise	100-200 bp resolution mapping of DNA-bound proteins
Sequencing depth	~10-fold lower sequencing depth compared to ChIP-seq
Compatibility	Automation

ChIC/CUT&RUN-validated product highlight: H3K4me3 monoclonal antibody (ab213224)

Chromosome 12



Copyright (c) 2021 Abcam plc.

ChIC/CUT&RUN sequencing

Achieve similar ChIC/CUT&RUN-seq results when comparing sequencing tracks to ChIP-seq with our antibodies.

Antibodies cross-validated with ChIC/CUT&RUN pAG-MNase (ab285373)

Targets	abID	Product name	Suitable applications
H3K4me3	ab213224	Anti-Histone H3 (tri methyl K4) antibody (EPR20551-225) - ChIP Grade	ChIP, ChIP-seq, ChIC/CUT&RUN-seq, CUT&Tag-seq, ICC/IF, IHC-P, WB
H3K4me	ab176877	Anti-Histone H3 (mono methyl K4) antibody (ERP16597) - ChIP Grade	ChIP, ChIP-seq, ChIC/CUT&RUN-seq, ICC/IF, IHC-P, PepArr, WB
H3K4me2	ab176878	Anti-Histone H3 (di methyl K4) antibody (EPR17707) - ChIP Grade	ChIP, ChIC/CUT&RUN-seq, ICC/IF, IHC-P, PepArr, WB
H3K9me3	ab176916	Anti-Histone H3 (tri methyl K9) antibody (EPR16601) - ChIP Grade	ChIC/CUT&RUN, CUT&Tag-seq, ChIP, ChIP-seq, Dot, ICC/IF, IHC-P, PepArr, WB
CTCF	ab188408	Anti-CTCF antibody (EPR18253) - ChIP Grade	ChIP, ChIP-seq, ChIC/CUT&RUN-seq, CUT&Tag-seq, ICC/IF, IHC-P, WB
H2A	ab177308	Anti-Histone H2A antibody (EPR17470) - ChIP Grade	ChIP, ChIC/CUT&RUN-seq, ICC/IF, IHC-P, PepArr, WB
TBP	ab220788	Anti-TATA binding protein TBP antibody (EPR21954) - ChIP Grade	ChIP, ChIP-seq, ChIC/CUT&RUN-seq, Flow Cyt (Intra), ICC/IF, IHC-P, IP, WB
H4K16ac	ab109463	Anti-Histone H4 acetyl K16 antibody (EPR1004)	ChIC/CUT&RUN-seq, Flow Cyt (Intra), WB, IHC-P, ICC/IF
SP1	ab231778	Anti-SP1 antibody (EPR22648-50)	ChIC/CUT&RUN-seq, ChIP-seq, Flow Cyt (Intra), WB, IHC-P, ICC/IF, IP, ChIP
IgG	ab172730	Recombinant Rabbit IgG, monoclonal (EPR25A)	ChIC/CUT&RUN-seq, ICC/IF, Flow Cyt, IHC-P, ChIP-seq, IP
LSD1	ab129195	Anti-KDM1/LSD1 antibody (EPR6825)	ChIC/CUT&RUN-seq, Flow Cyt (Intra), WB, IP, IHC-P, ICC/IF, ChIP
HDAC1	ab150399	Anti-HDAC1 antibody (EPR5517(2))	ChIC/CUT&RUN-seq, WB, IHC-P, IP, Flow Cyt
RUNX2	ab236639	Anti-RUNX2 antibody (EPR22858-106)	ChIC/CUT&RUN-seq, IP, ChIP, IHC-P, WB
NRF1	ab175932	Anti-NRF1 antibody (EPR5554(N))	ChIC/CUT&RUN-seq, ChIP-seq, Flow Cyt (Intra), ChIP, WB, ICC/IF, IP, IHC-P
CDK9	ab239364	Anti-Cdk9 antibody (EPR22956-37)	ChIC/CUT&RUN-seq, ChIP-seq, Flow Cyt (Intra), IP, WB, IHC-P, ICC/IF, ChIP

[Click for more information](#)

[Click to stay updated with our latest epigenetics news](#)

References:

- Schmid M, Durussel T, Laemmli U K. ChIC and ChEC: genomic mapping of chromatin proteins. *Mol Cell*, 16(1):147-57 (2004)
- Skene P J, Henikoff J G, Henikoff S. Targeted in situ genome-wide profiling with high efficiency for low cell numbers. *Nat Protoc*, 13:1006-1019 (2018)