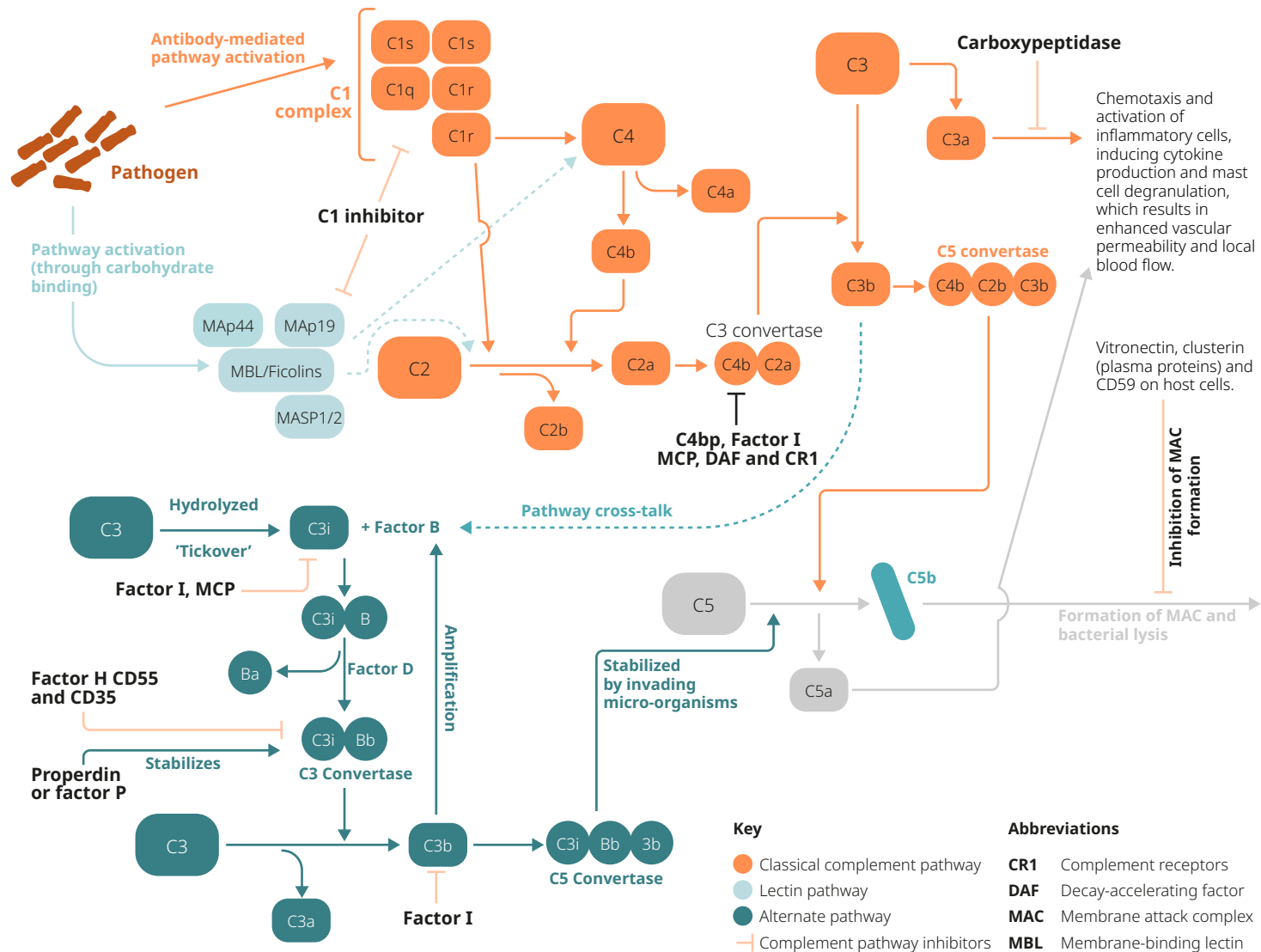
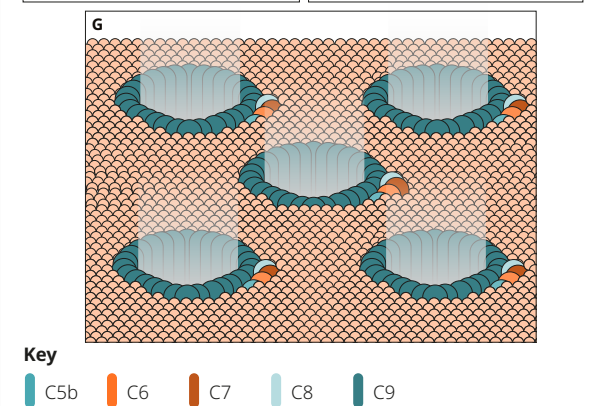
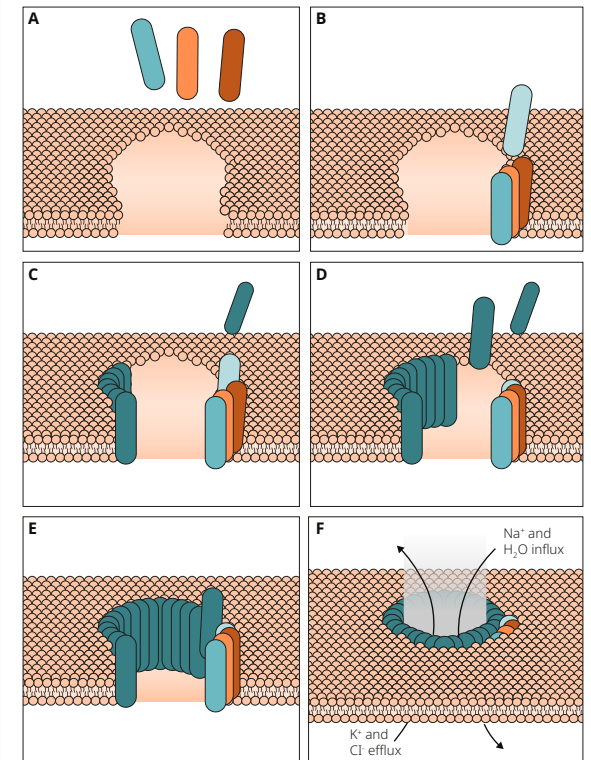


The complement cascade

Produced in collaboration with Claudie Hooper.



Membrane attack complex



Related antibodies

| Antibodies | Clonality | Applications | Host | Species reactivity | Product code | Proteins/peptides |
|--------------------------------------|------------|--------------------------------------|------|--------------------|--------------|-------------------|
| C1q [JL-1] | monoclonal | ELISA, Flow Cyt, FuncS, IHC-Fr, WB | Ms | Hu, Ms, Rat | ab71940 | ab96363 |
| C1r | polyclonal | WB | Rb | Hu | ab71652 | ab116915 |
| C1s | polyclonal | ICC/IF, WB | Rb | Hu | ab66762 | ab116902 |
| C1s [EPR9066(E)] | monoclonal | Flow Cyt, IHC-P, WB | Rb | Hu | ab134943 | ab116902 |
| C2 | polyclonal | ICC/IF, IHC-P, WB | Rb | Hu | ab77498 | ab94384 |
| C2b | polyclonal | WB | Rb | Ms | ab66999 | ab95402 |
| C3a / C3a des Arg [4H3] - Azide free | monoclonal | ELISA, IHC-P, WB | Ms | Hu | ab37230 | - |
| C4 | monoclonal | WB | Ms | RecFrag | ab54902 | - |
| C4a | polyclonal | WB | Rb | Hu | ab87429 | ab86260 |
| C4b | polyclonal | ICC/IF, IHC-P, WB | Rb | Hu | ab66791 | ab114287 |
| C5 / C5a [2942] | monoclonal | FuncS, IHC-Fr, IHC-P, WB | Ms | Hu | ab11877 | ab61918 |
| C5b-9 | polyclonal | ICC/IF, IHC-FoFr, IHC-Fr, IHC-P, RID | Rb | Hu, Ms | ab55811 | ab51973 |
| C5b-9 [2A1] | monoclonal | ICC/IF, WB | Ms | Rat | ab83076 | ab90892 |
| C6 | polyclonal | ICC/IF, WB | Rb | Hu | ab74638 | ab131766 |
| C7 [EPR703] | monoclonal | Flow Cyt, ICC/IF, IHC-P, WB | Rb | Hu, Ms, Rat | ab126786 | ab95412 |
| C9 | polyclonal | IHC-P, WB | Rb | Hu | ab71330 | ab114199 |
| CD35 [E11] (FITC) | monoclonal | Flow Cyt, IHC-Fr, IHC-P, IP, WB | Ms | Hu | ab82441 | - |
| CD35 [EPR660] | monoclonal | ICC, IHC-P, WB | Rb | Hu | ab126737 | - |
| CD55 [143-30] (FITC) | monoclonal | Flow Cyt, IHC-Fr | Ms | Hu, Pig | ab25634 | ab80038 |
| CD55 [EPR668] | monoclonal | IHC-P, WB | Rb | Hu | ab133684 | ab80038 |
| Factor B [KT21] | monoclonal | sELISA, WB | Ms | Hu | ab110651 | ab73657 |
| Factor D | polyclonal | WB | Rb | Hu | ab111204 | ab139231 |
| Factor H | polyclonal | IHC-P, WB | Rb | Hu | ab112060 | ab131757 |
| Factor H [EPR622] | monoclonal | ICC, WB | Rb | Hu | ab133536 | ab131757 |
| Factor H [OX-24] (FITC) | monoclonal | Flow Cyt | Ms | Hu | ab112205 | ab131757 |
| Factor I [OX-21] | monoclonal | ELISA, Flow Cyt, IHC-P, IP, WB | Ms | Hu | ab115312 | - |
| Ficolin 2 | polyclonal | IP, WB | Rb | Hu | ab118374 | - |
| MASP1 | polyclonal | ICC/IF, WB | Rb | Hu | ab65891 | - |
| MBL [3B6] | monoclonal | IHC-Fr, IHC-P, sELISA, WB | Ms | Hu | ab121075 | - |
| Properdin | polyclonal | WB | Rb | Hu | ab94597 | ab114924 |

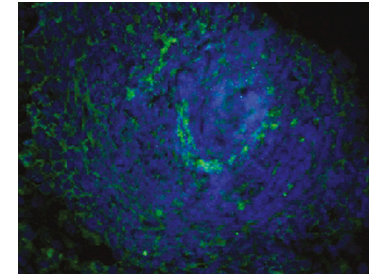
Related ELISA kits

| Targets | Reacts with | Assay type | Sample type | Sensitivity | General range | Product code |
|------------------------|-------------|-------------|--|-------------|------------------|--------------|
| Complement C3 | Hu | Sandwich | Serum, Plasma | 0.5 µg/ml | 30 - 0.47 µg/ml | ab108822 |
| Complement C3 | Hu | Sandwich | Cell culture supernatant, Saliva, Milk, Urine | 0.6 ng/ml | 40 - 0.625 ng/ml | ab108823 |
| Complement C3a des Arg | Hu | Competitive | Plasma | 0.12 ng/ml | 20 - 0.313 ng/ml | ab133037 |
| Complement C4 | Hu | Sandwich | Serum, Plasma | 0.3 µg/ml | 5 - 0.313 µg/ml | ab108824 |
| Complement C4 | Hu | Sandwich | Cell culture supernatant, Saliva, Urine | 0.08 ng/ml | 20 - 0.078 ng/ml | ab108825 |
| Complement C5 | Hu | Competitive | Cell culture supernatant, Saliva, Milk, Serum, Plasma | 0.3 ng/ml | 6 - 0.6 ng/ml | ab125963 |
| Complement C6 | Hu | Competitive | Saliva, Milk, Urine, Serum, Plasma, Cell culture extracts | 0.7 ng/ml | 25 - 2.5 ng/ml | ab125965 |
| Complement C7 | Hu | Competitive | Cell culture supernatant, Saliva, Milk, Urine, Serum, Plasma | 0.6 ng/ml | 10 - 1 ng/ml | ab125964 |

Discover more at [abcam.com/complement](https://www.abcam.com/complement)

Copyright © 2024 abcam. All rights reserved.

Product highlights



C1q antibody [JL-1] (ab71940)

Immunohistochemical staining of C1q using ab71940, in paraformaldehyde fixed, frozen rat spleen tissue sections.

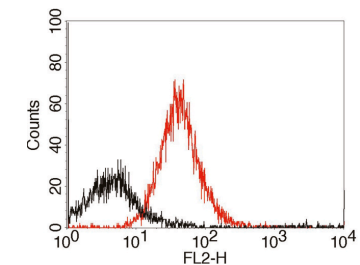
Clonality

Monoclonal

Applications

ELISA, Flow Cyt, FuncS, IHC-Fr, WB

| | |
|------|--------------------------|
| Host | Species cross reactivity |
| Ms | Hu, Ms, Rat |



EasyLink antibody conjugation kits

EasyLink kits allow rapid conjugation of your antibody to a wide choice of fluorescent labels including tandem dyes.

Histogram shows integrin beta-3 positive population of platelets from WT and KO mice. The integrin beta-3 antibody was conjugated using EasyLink R-PE conjugation kit (ab102919). Mice expressing beta-3 (red) had a clear shift in FL-2 fluorescence over beta-3 KO mice (black).

Visit www.abcam.com/EasyLink for more details.

progress happens together
abcam